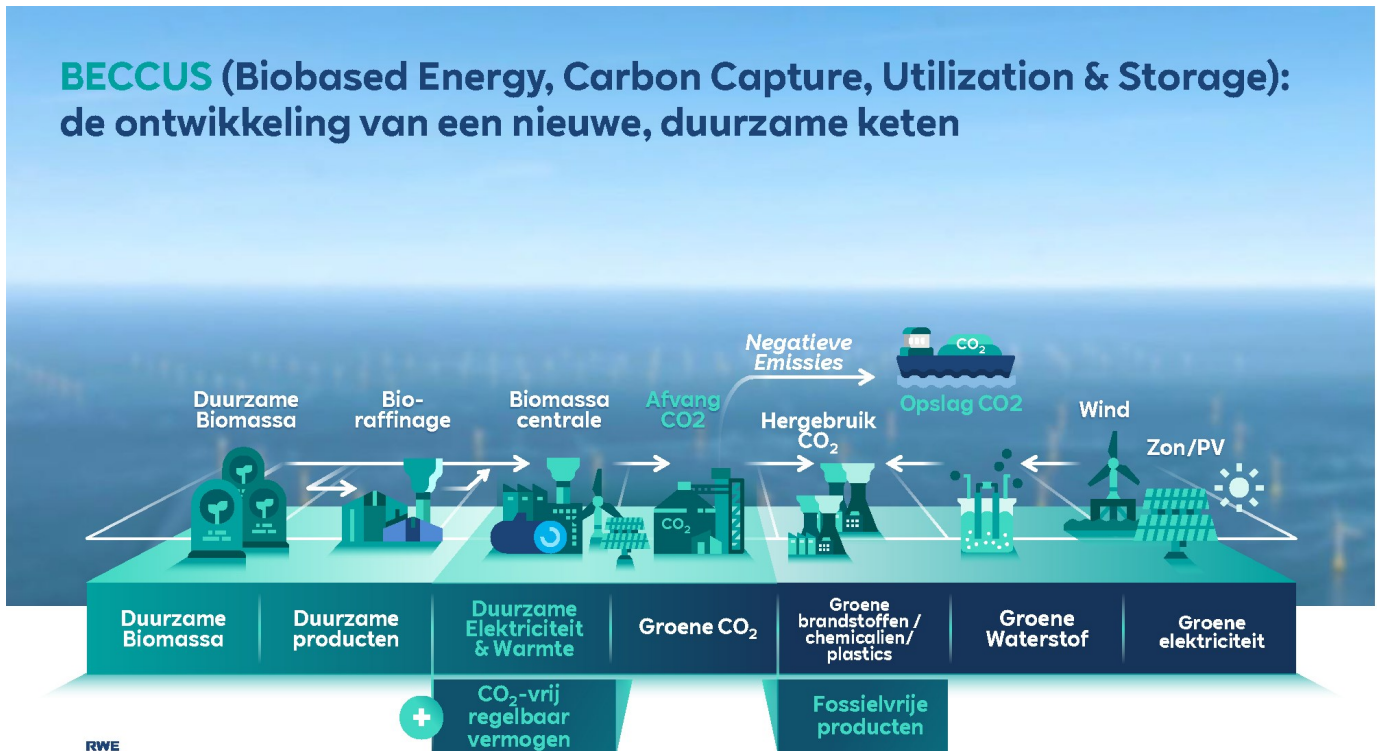


### RWE launches project BECCUS for large-scale capture and storage of CO<sub>2</sub>

**BECCUS (Biobased Energy, Carbon Capture, Utilization & Storage):**  
de ontwikkeling van een nieuwe, duurzame keten



- Negative carbon emissions essential for meeting Dutch climate targets
- RWE's Eemshaven power plant and Amer power plant can deliver 11 - 14 megatons of negative CO<sub>2</sub> per year
- Knowledge and technology on negative emissions are there, upscaling and accelerating are needed

Geertruidenberg, 13 December 2022



"With our comprehensive investment and growth strategy 'Growing Green', we are investing more than €50 billion worldwide this decade in wind, solar, storage, green hydrogen and making existing plants more sustainable. Part of this is the BECCUS (Bio-Energy Carbon Capture Utilisation & Storage) project, through which we are reusing and storing CO<sub>2</sub> of sustainable, biogenic origin at the Amer and Eemshaven power plants. This will result in negative emissions of 11-14 megatons in 2030. That amounts to between 7 and 9 per cent of the annual CO<sub>2</sub> emissions of the whole of the Netherlands. By comparison, to meet the climate targets, the government still has a gap of between 12 and 36 megatons of CO<sub>2</sub> to fill, according to PBL. RWE's deployment makes a major contribution to that."

**Roger Miesen, CEO of RWE Generation SE**

To meet the one-and-a-half-degree target, the amount of CO<sub>2</sub> in the air needs to be drastically reduced. One way to do this is to add less CO<sub>2</sub> to the atmosphere but that is not enough. On a European and global scale, large amounts of negative emissions that remove net CO<sub>2</sub> from the air are unavoidable, the Intergovernmental Panel on Climate Change ([IPCC](#)), the Netherlands Environmental Assessment Agency ([PBL](#)) and the [Dutch government](#) concluded the recent years. This is also indispensable in the Netherlands in the (medium-)long term. The recently published Climate and Energy Outlook shows a big gap towards 2030: PBL expects at least 39% and at most 50% CO<sub>2</sub> reductions with existing policies, while 55% was the minimum target and 60% the target. This is a gap of 12 to 36 megatons. A fair number of companies and startups in the Netherlands are now ready to start working on this, including RWE.

### **Taskforce Negative Emissions (TNE)**

RWE presented the plans for the BECCUS project during the kick-off of the Taskforce Negative Emissions (TNE). In the Taskforce, set up by the [CCU alliance](#) in cooperation with the Dutch Sustainable Energy Association (NVDE), companies and scientific institutions work on capturing and sequestering CO<sub>2</sub> in products and processes, leading to avoided and negative emissions. There are now several initiatives that can capture and sequester atmospheric and biogenic CO<sub>2</sub> underground (BECCS), in products (BECCUS) and in nature (Nature Based Solutions, NbS).

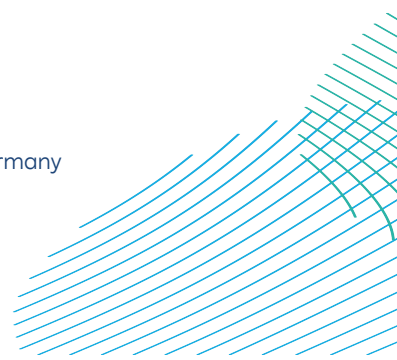
## **Negative emissions no excuse for delayed action**

According to RWE, renewable energy generated by wind and solar is the so called workhorse of the energy transition but power plants continue to play an important role because of their controllable or flexible power. This is essential for a reliable, sustainable energy system in the Netherlands. RWE is therefore making its power plants more sustainable, replacing gas with green hydrogen, and with its coal- and biomass-fired power plants, the company is going one step further. Here, the ambition is to bring the power plants step by step to 100% biofuels and add CO<sub>2</sub> capture, reuse and storage, if technically and economically feasible.

RWE wants to partially reuse the captured CO<sub>2</sub> for sustainable plastics and biofuels and store the other part. This will create negative CO<sub>2</sub>. This storage could, for example, be in gas fields in the North Sea and off the coast of Norway, where such projects are being worked on.

## **Speed required from government**

Knowledge and technology are in place and more and more companies are basing their strategy for the coming years on the negative emissions pathway. But scale-up and speed are needed to achieve large-scale development. However, the government does not yet have a policy vision and among companies there is fragmented knowledge and experience on the business application of CO<sub>2</sub> capture and reuse. The Negative Emissions Taskforce (TNE) wants to change this and outlines in a Manifesto what is needed to achieve this, such as, for example, the development of a negative emissions roadmap, support and stimulation of the technologies and the creation of a market.





**For further enquiries:** Marjanne van Ginkel

Spokeswoman

**T** [+31 \(0\) 61 141 3772](tel:+3120611413772)

**E** [Marjanne.van.Ginkel@rwe.com](mailto:Marjanne.van.Ginkel@rwe.com)

## **RWE**

RWE is leading the way to a green energy world. With an extensive investment and growth strategy, the company will expand its powerful, green generation capacity to 50 gigawatts internationally by 2030. RWE is investing more than €50 billion gross for this purpose in this decade. The portfolio is based on offshore and onshore wind, solar, hydrogen, batteries, biomass and gas. RWE Supply & Trading provides tailored energy solutions for large customers. RWE has locations in the attractive markets of Europe, North America and the Asia-Pacific region. The company is responsibly phasing out nuclear energy and coal. Government-mandated phaseout roadmaps have been defined for both of these energy sources. RWE employs around 19,000 people worldwide and has a clear target: to get to net zero by 2040. On its way there, the company has set itself ambitious targets for all activities that cause greenhouse gas emissions. The Science Based Targets initiative has confirmed that these emission reduction targets are in line with the Paris Agreement. Very much in the spirit of the company's purpose: Our energy for a sustainable life.

## **General Data Protection Regulation**

*The personal data processed in connection with the press releases will be processed in compliance with the legal data protection requirements. If you are not interested in continuing to receive the press release, please inform us at [Datenschutz-kommunikation@rwe.com](mailto:Datenschutz-kommunikation@rwe.com). Your data will then be deleted and you will not receive any further press releases from us in this regard. If you have any questions about our data protection policy or the exercise of your rights under the GDPR, please contact [datenschutz@rwe.com](mailto:datenschutz@rwe.com).*

